



# YAMATO OFFICE CENTER





For Lease  
±1,358-24,031 SF  
Premier Boca Raton  
Office/Medical Space

**Move-In Ready Spaces  
& Full Floor with Signage**



## Yamato Office Center

999 & 1001 Yamato Road  
Boca Raton, FL 33431



### Property Features:

- **NEW outdoor seating lounge**
- Fantastic office space with beautiful lobbies, lush landscaping, and a great corporate park location near the best of Boca Raton
- Amenities include keycard access, tenant conference facility, outside seating area, 24/7 HVAC, and ample parking with covered available
- Separately metered electric at 1001 Yamato
- Direct visibility and access from Yamato Road
- Just 1 minute from I-95, 7 minutes to the Florida Turnpike, and near two major hospitals

### Key Highlights:



Fantastic location  
near outstanding  
lifestyle amenities



Variety of floor  
plan sizes to suit  
your needs



Medical use  
approved

**Richard W. Brockney**  
Director | [rbrockney@mhcreal.com](mailto:rbrockney@mhcreal.com)

**Patrick Almand**  
Associate | [palmand@mhcreal.com](mailto:palmand@mhcreal.com)

**Neil E. Merin, SIOR, CCIM**  
Chairman | [merinlistings@mhcreal.com](mailto:merinlistings@mhcreal.com)





**FOR LEASE: YAMATO OFFICE CENTER**

# Move-In Ready Office Space Near I-95

**999-1001 YAMATO ROAD, BOCA RATON, FL 33431**



## Strategic Location with Exceptional Neighboring Amenities

This Class-A office center with medical zoning offers easy access to I-95 and is well-located in a blossoming live-work-play environment with over 2,500 newly developed residential units nearby.

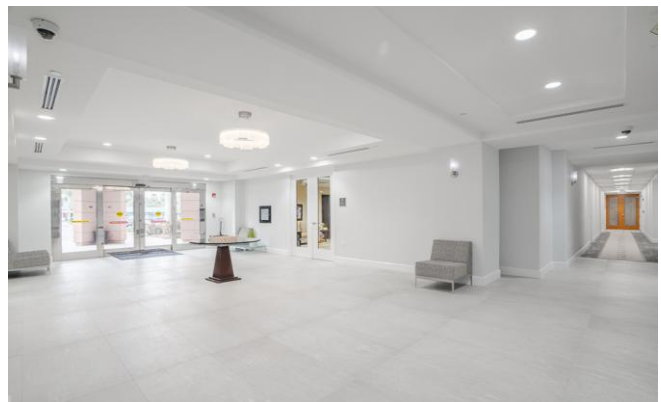
Yamato Office Center is minutes away from countless dining, retail, and lifestyle amenities, with a Tri-Rail stop within walking distance and a planned Brightline stop.

2025 Est. CAM: 999 Building \$13.00/SF – full service | 1001 Building \$13.50/SF – separately metered electric.



**CLICK HERE  
FOR 3D TOURS!**

## NEW Outdoor Lounge



**For More Information:**

Richard W. Brockney or Patrick Almand | 561 471 8000 | [www.mhcreal.com](http://www.mhcreal.com)



# FOR LEASE: YAMATO OFFICE CENTER

## Move-In Ready Suite, Tailored for Success



### 999 - Suite 200

±2,743 SF

- Sun-soaked corner office with abundant light
- Flexible open office area
- Kitchen/break area
- Printer/work area
- Three private offices with glass accents
- One conference room



**CLICK HERE  
FOR 3D TOUR!**



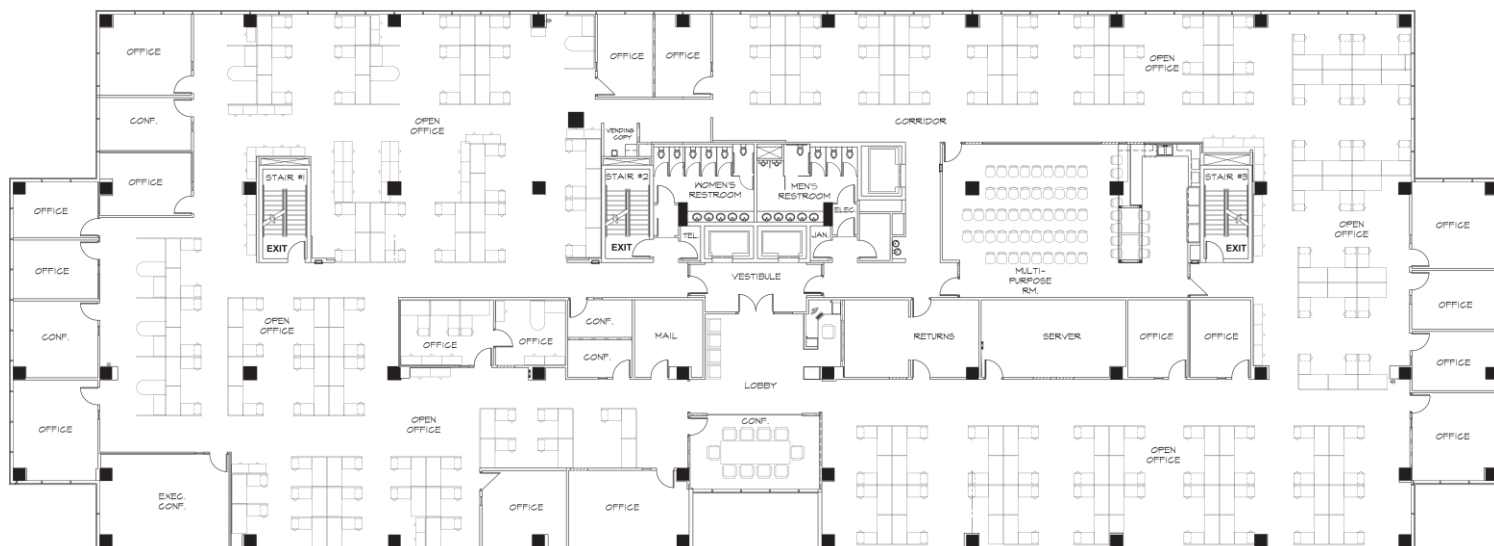
*Furnishings are for illustrative purposes only and are not included*

### For More Information:

Richard W. Brockney or Patrick Almand | 561 471 8000 | [www.mhcreal.com](http://www.mhcreal.com)

# FOR LEASE: YAMATO OFFICE CENTER

## Full Floor with Building & Monument Signage Available



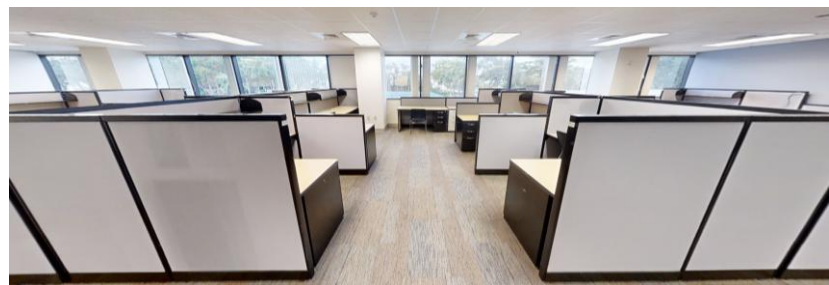
### 1001 - Suite 200 ±8,000-24,031 SF

- Rare plug & play corporate HQ opportunity, with functional layout & furniture available
- Mostly open plan, divisible from ±8,000 SF
- Multiple signage opportunities
- Abundant natural light through panoramic window lines
- Modern build-out including glass sidelights, diverse meeting rooms, open work areas, a well-equipped kitchen/breakroom with bar and round table seating, and more



**CLICK HERE  
FOR 3D TOUR!**

**YOUR NAME HERE**



**For More Information:**

Richard W. Brockney or Patrick Almand | 561 471 8000 | [www.mhcreal.com](http://www.mhcreal.com)