

For Lease
±747-2,444 SF
Office Space

Yes – THAT Reynolds!
Previously lived in by
Burt himself!



Reynolds Plaza 1061 E. Indiantown Road | Jupiter, FL 33477

Property Features

- First-class office building with new owners
- Fantastic, contemporary upgrades to exterior, lobby, and common area restrooms
- Less than half a mile from Jupiter Beach with panoramic views of the Atlantic
- Close to numerous restaurants, banking, and shopping, including Harbourside Place
- Easy access to arterial roads & highways like A1A, US-1, I-95 and the Florida Turnpike
- Located east of US-1 on the north side of Indiantown Road, next to Maltz Jupiter Theatre

Key Highlights



Great location close to
main roads and highways



Adjacent to Jupiter Beach
and area amenities



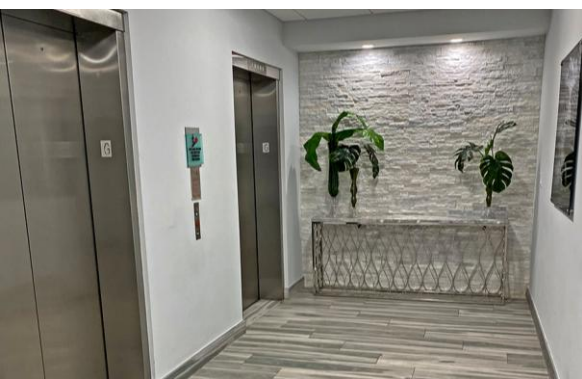
Ample parking

Lesley Sheinberg, Managing Director
561 254 7810 | lsheinberg@mhcreal.com



FOR LEASE: REYNOLDS PLAZA

±747-2,444 SF Office Space Near Jupiter Beach



Easy access to A1A, I-95 and the Florida Turnpike, offering a prime Northern Palm Beach County location for professionals who want to embrace the Florida lifestyle.

Property: 5-story office building in Jupiter submarket

Available Space:
Suite 309: 747 SF
Suite 404: 2,444 SF
Suite 412: 1,554 SF

Rental Rate: \$28.00-\$30.00/SF NNN; \$16.50/SF CAM

Parking: Free surface parking (5.2:1,000)

