

For Lease  
±3,138 SF  
Class-A Office/Medical  
in the heart of Wellington

**LAST SUITE  
REMAINING!**



**Mizner Place** 12300 South Shore Boulevard, Wellington, Florida 33414

## A PREMIER DESTINATION FOR WELLINGTON PROFESSIONALS

### Property Features

- Highly improved building
- Building signage, improvement allowance and covered parking available
- Located in the Equestrian Capital of the World, with a mecca of equestrian programs, activities and events
- In the heart of Wellington, adjacent to Palm Beach Polo. Minutes from Florida Turnpike, US Hwy 441 and the Mall at Wellington Green

For more information:

**Jason L. Sundook, SIOR**

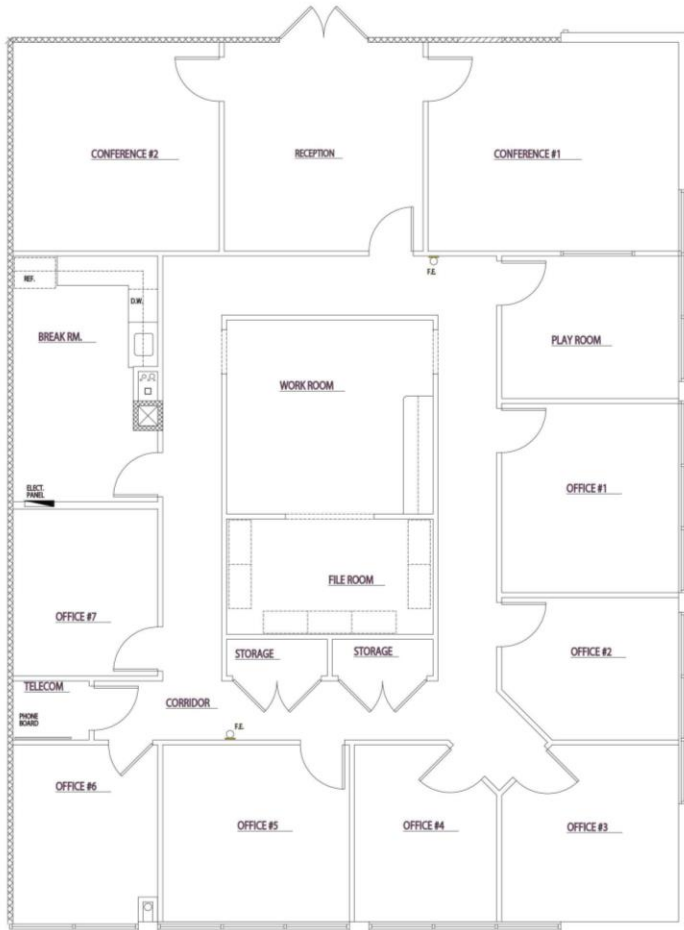
Principal | [jsundook@mhcreal.com](mailto:jsundook@mhcreal.com)



**FOR LEASE: MIZNER PLACE, 12300 SOUTH SHORE BLVD.**  
**±3,138 SF Office Space in the Heart of Wellington**

**Suite 222** 3,138 SF

**Key Features:**



\*Not to scale. Subject to error.



Office, medical and retail space



Approved for medical use



Building signage



New On-site Restaurant



Equestrian community

