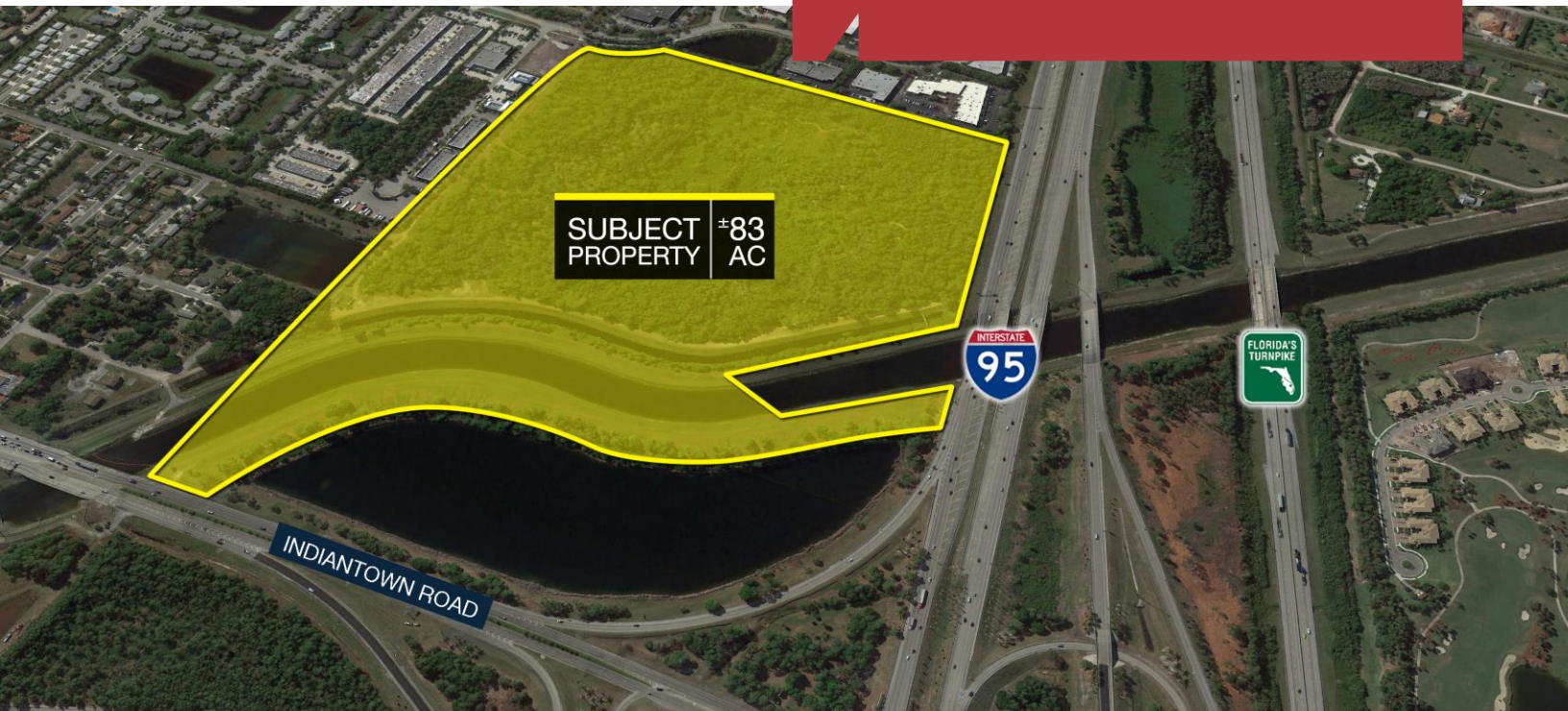


For Sale

Last Large I-95 Interchange
Development Opportunity
in South Florida's tri-county area



To Learn More About This Opportunity Please Visit: JustListedByMHC.com

Jupiter Interchange Land

SE Corner of Indiantown Road & I-95
Jupiter, FL 33458

Property Features

The last large I-95 interchange development opportunity in Miami-Dade, Broward and Palm Beach counties. This is a once in a lifetime development opportunity - not again to be seen or assembled in South Florida.

This ±83 acre parcel offers unrivaled exposure and access to both I-95 and the Florida Turnpike on Indiantown Road in Jupiter. The land holds a potential to build up to 1M SF with I-1, Industrial Park/Light Industrial zoning.

Key Features



Unrivaled exposure
and access



Generational development
opportunity



Proposed site plan in
place

For more information

Neil E. Merin, SIOR, CCIM

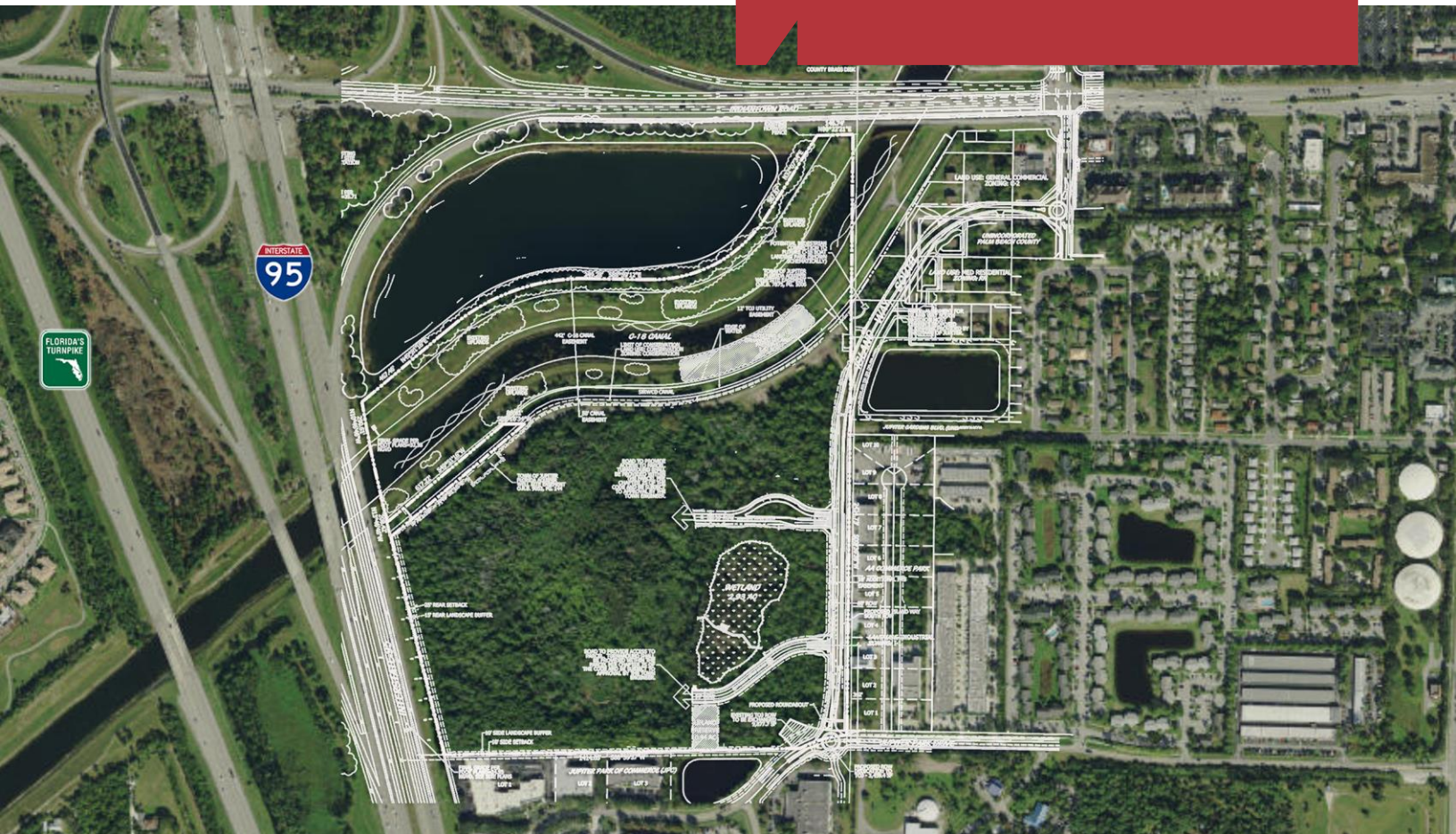
Chairman
merinlistings@mhcreal.com

Jupiter Interchange Land

SE Corner of Indiantown Road & I-95
Jupiter, FL 33458

For Sale

Last Large I-95 Interchange
Development Opportunity
in South Florida's tri-county area



± 83

ACRES

Potential uses include
research & development,
corporate office,
employment center,
technology

I-1

ZONING

Industrial park, light
industrial

± 1M

SQ. FT.

Utilities, storm water,
road access and
traffic concurrency
ready for development

Price:

\$37,990,000

Neil E. Merin, SIOR, CCIM

Chairman

merinlistings@mhcreal.com

NO WARRANTY OR REPRESENTATION, EXPRESS OR IMPLIED, IS MADE AS TO THE ACCURACY OF THE INFORMATION CONTAINED HEREIN, AND THE SAME IS SUBMITTED SUBJECT TO ERRORS, OMISSIONS, CHANGE OF PRICE, RENTAL OR OTHER CONDITIONS, PRIOR SALE, LEASE OR FINANCING, OR WITHDRAWAL WITHOUT NOTICE, AND OF ANY SPECIAL LISTING CONDITIONS IMPOSED BY OUR PRINCIPALS NO WARRANTIES OR REPRESENTATIONS ARE MADE AS TO THE CONDITION OF THE PROPERTY OR ANY HAZARDS CONTAINED THEREIN ARE ANY TO BE IMPLIED.

1601 Forum Place Suite 700

West Palm Beach FL 33401

561 471 8000

mhcreal.com