

For Lease

±2,524-28,547 SF  
Office Space



# Deerfield Office Center

1400 East Newport Center Drive  
Deerfield Beach, FL 33442

## Property Features

- Recently upgraded office building fronting I-95 with building signage available
- **New shared conference facility!**
- Located within the well-maintained Newport Center Business Park - with beautiful landscaping, a 6-acre lake, walking trails, and two hotels
- Excellent access to all South Florida highways, with a great location just west of I-95 at SW 10<sup>th</sup> Street
- Ample parking with reserved available

For more information:

**Lesley Sheinberg**, Managing Director  
[lsheinberg@mhcreal.com](mailto:lsheinberg@mhcreal.com) | 561 254 7810

## Key Highlights



Small, medium and  
larges suites available  
to suit your needs



Building signage  
available



Adjacent to I-95 and  
plentiful retail/dining



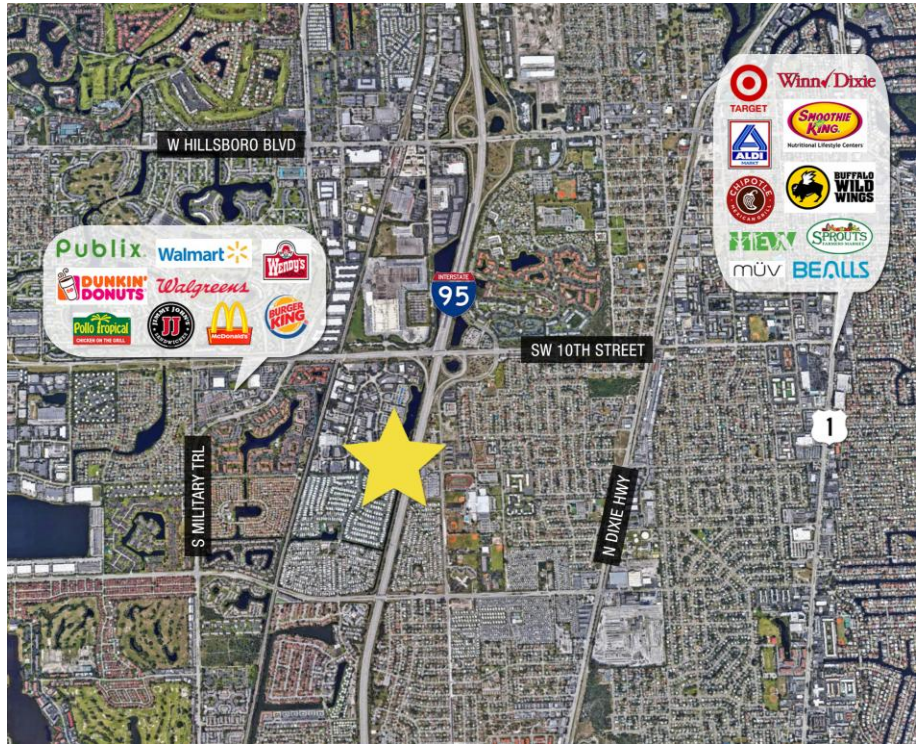
100% full back-up  
generator





**FOR LEASE: DEERFIELD OFFICE CENTER**

**Premier Deerfield Beach Office Building**



**Available Space: ±2,524 – 32,324 SF**

Suite 101: ±5,863 SF      Suite 200: ±12,853 SF  
Suite 102: ±5,133 SF      Suite 203: ±2,524 SF  
Suite 105: ±4,202 SF      Suite 205: ±2,965 SF  
Suite 106: ±9,772 SF  
Suite 107: ±3,577 SF

**Rental Rate**

\$18.00/SF NNN; \$9.50/SF CAM

**Parking**

Ample parking with reserved available  
(6/1,000)

**INCREDIBLE  
OPPORTUNITY**  
**in a Fantastic Location**


Deerfield Office Center offers an ideal location for small, medium, and large corporate headquarters users. It's adjacent to I-95 and just off the Sawgrass Expressway, near a plethora of shopping, dining, and lifestyle amenities.


**LET'S WORK TO CUSTOMIZE YOUR PERFECT SPACE!**

**FOR MORE INFORMATION:**

**Lesley Sheinberg**, Managing Director  
[lsheinberg@mhcreal.com](mailto:lsheinberg@mhcreal.com) | C: 561 254 7810 | O: 561 471 8000

NO WARRANTY OR REPRESENTATION, EXPRESS OR IMPLIED, IS MADE AS TO THE ACCURACY OF THE INFORMATION CONTAINED HEREIN, AND THE SAME IS SUBMITTED SUBJECT TO ERRORS, OMISSIONS, CHANGE OF PRICE, OR WITHDRAWAL WITHOUT NOTICE.

 561 471 8000

 1601 Forum Place, Suite 700  
West Palm Beach, FL 33401

 [www.mhcreal.com](http://www.mhcreal.com)

# FOR LEASE: DEERFIELD OFFICE CENTER

## Flexible Floor Plan Options Available

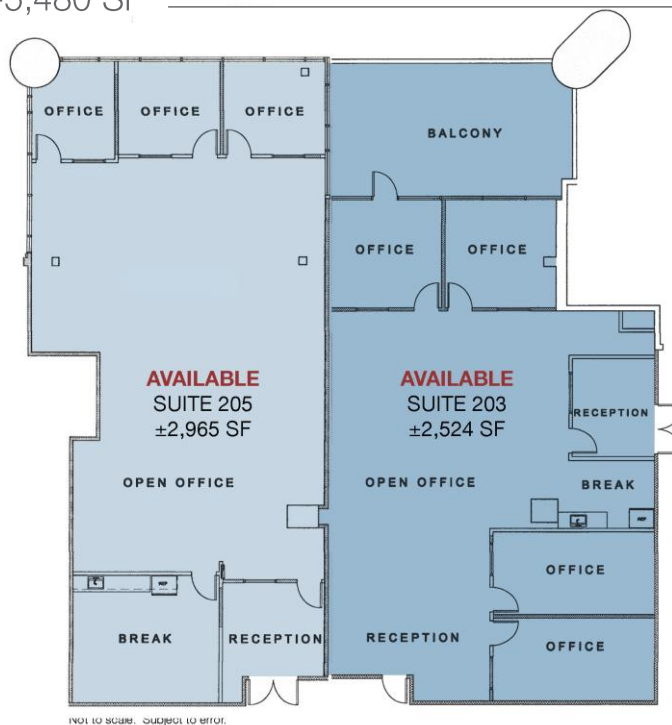
### First Floor | ±3,577-28,547 SF

Custom Configurations Available



### Second Floor | ±2,524-5,480 SF

New Spec Suites



**For More Information:**

Lesley Sheinberg | [lsheinberg@mhcreal.com](mailto:lsheinberg@mhcreal.com)



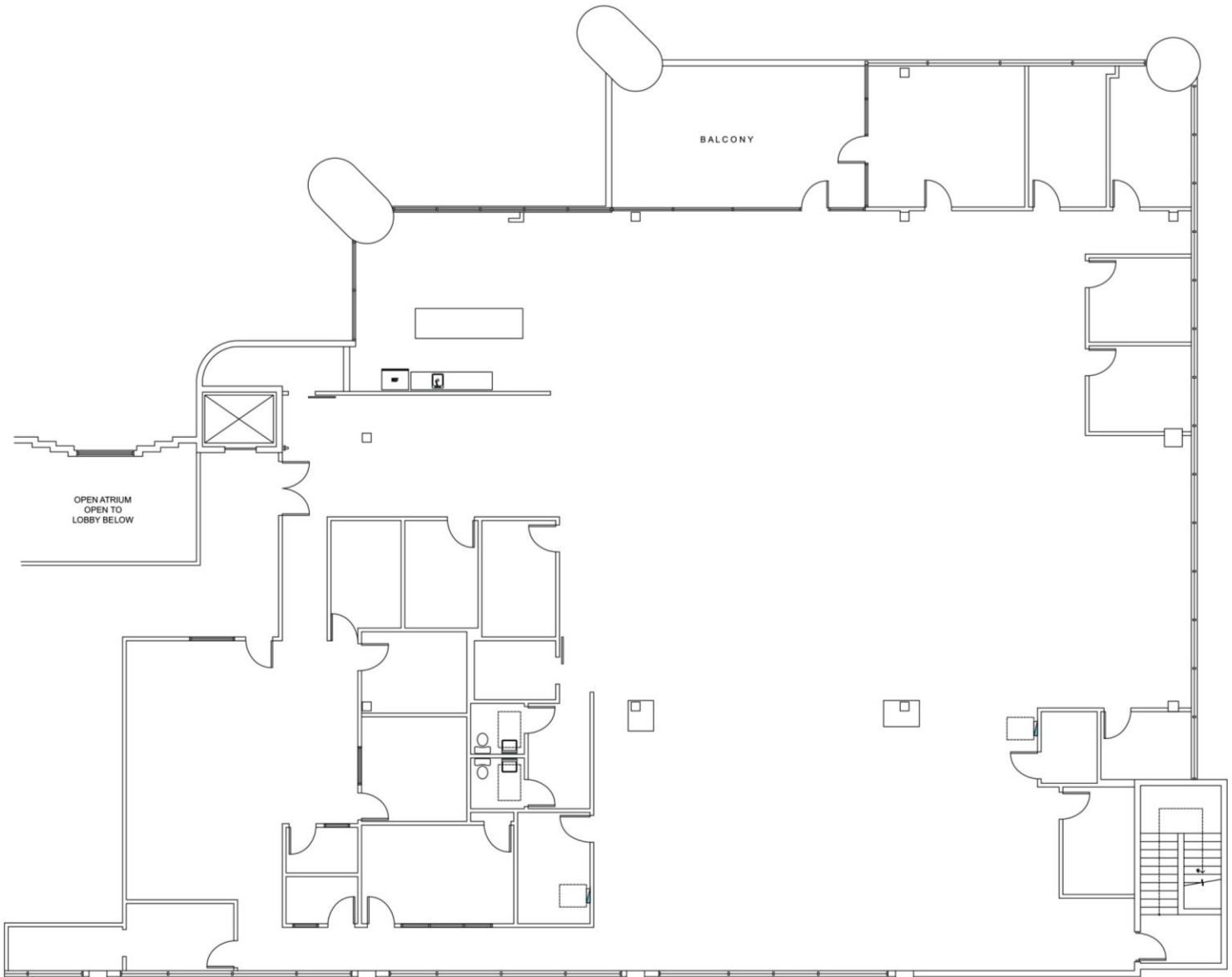
561 471 8000



[www.mhcreal.com](http://www.mhcreal.com)

**FOR LEASE: DEERFIELD OFFICE CENTER**  
**Spacious & Fully Built-Out Office Suite**

**Suite 200** | ±12,853 SF



\*Not to scale. Subject to error.

**CALL TO SCHEDULE  
YOUR TOUR TODAY!**

**Lesley Sheinberg, Managing Director**  
[lsheinberg@mhcreal.com](mailto:lsheinberg@mhcreal.com) | C: 561 254 7810 | O: 561 471 8000

NO WARRANTY OR REPRESENTATION, EXPRESS OR IMPLIED, IS MADE AS TO THE ACCURACY OF THE INFORMATION CONTAINED HEREIN, AND THE SAME IS SUBMITTED SUBJECT TO ERRORS, OMISSIONS, CHANGE OF PRICE, OR WITHDRAWAL WITHOUT NOTICE.



561 471 8000



1601 Forum Place, Suite 700  
West Palm Beach, FL 33401



[www.mhcreal.com](http://www.mhcreal.com)