

For Lease

±1,000-9,212 SF
Class-A Office Space



Commercial Tower at Executive Airport

2101 W Commercial Boulevard
Fort Lauderdale, FL 33309

Property Features

- Class-A building with upgraded common area finishes, beautiful lake views, and 24-hour key card access
- NEW state-of-the-art tenant conference center
- Easy access to Fort Lauderdale Executive Airport and Cypress Creek business district
- Close to plentiful retail, dining, and banking



Key Highlights



Close to I-95 and the Florida Turnpike



Recently upgraded common areas



Abundant parking with covered available



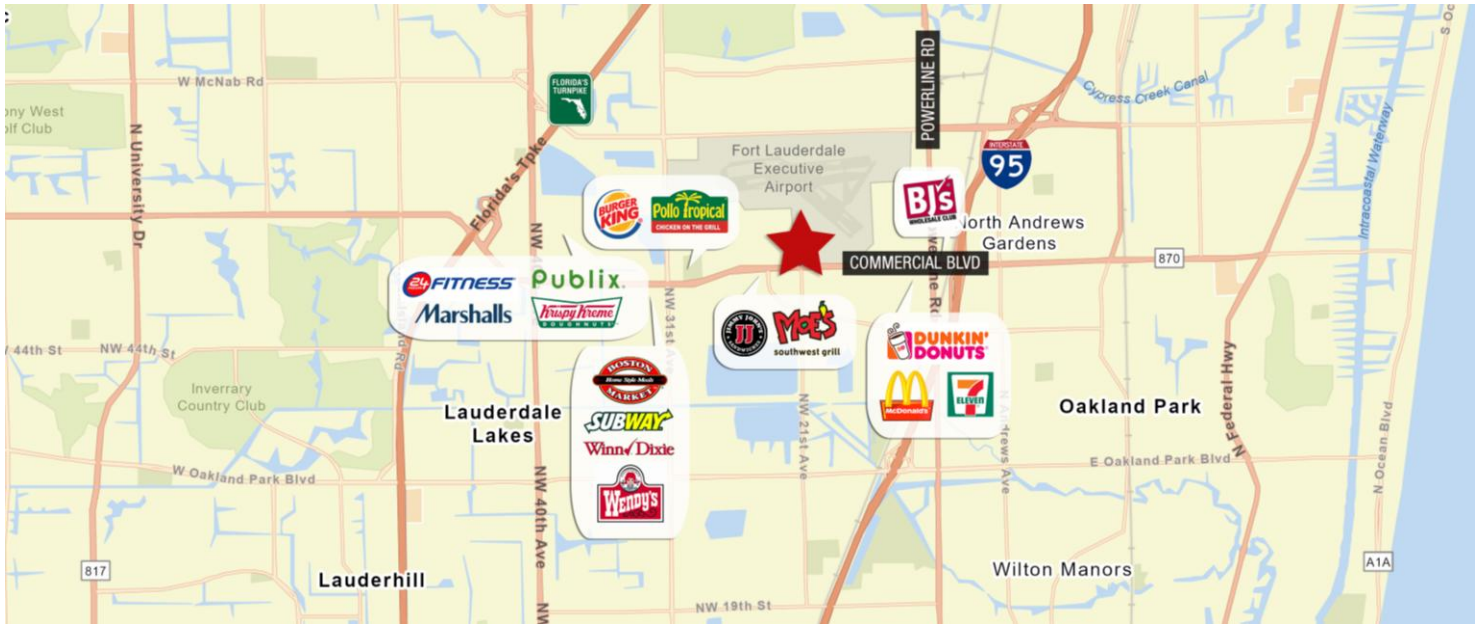
Close to numerous conveniences and amenities

For more information:

Lesley Sheinberg, Managing Director
lsheinberg@mhcreal.com | C: 561 254 7810



FOR LEASE: COMMERCE POINT, FORT LAUDERDALE
±1,000–9,212 SF Upgraded Office Space Near I-95



**INCREDIBLE
OPPORTUNITY**
in a Fantastic Location

Available Space

Suite 1250: 1,000 SF	Suite 4000: 9,212 SF
Suite 1400: 3,156 SF	<u>Spec Suite Options</u>
Suite 2000: 3,287 SF	• Suite 4A: 2,695 SF
Suite 2600: 8,800 SF (divisible from 1,870 SF)	• Suite 4B: 3,665 SF
	• Suite 4C: 2,852 SF
	Suite 5200: 1,562 SF
	Suite 5350: 1,550 SF

Rental Rate

\$17.50/SF NNN; \$16.50/SF CAM
(electric & janitorial are included)

Parking

Ample parking with covered available (4/1,000)



VIEW 3D TOURS



FOR MORE INFORMATION:

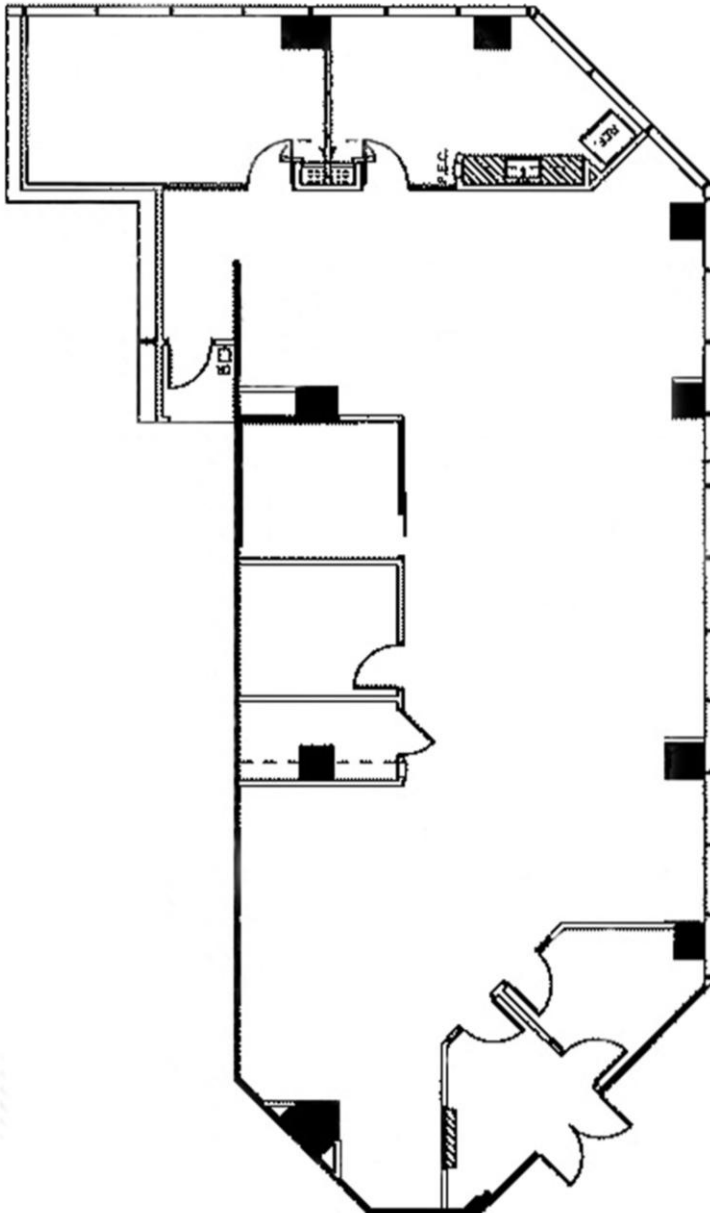
Lesley Sheinberg, Managing Director
lsheinberg@mhcreal.com | C: 561 254 7810 | O: 561 471 8000

FOR LEASE: COMMERCIAL TOWER AT EXECUTIVE AIRPORT

Premier Fort Lauderdale Office Space

Suite 1400 3,156 SF

First-Floor Suite



*Not to scale. Subject to error.



For More Information:

Lesley Sheinberg | Isheinberg@mhcreal.com



561 471 8000



www.mhcreal.com

FOR LEASE: COMMERCIAL TOWER AT EXECUTIVE AIRPORT

ALMOST COMPLETE: Brand New Spec Suites

Fourth Floor 2,695-9,212 SF

Flexible Space to Suit Your Unique Needs



WE WELCOME

SOLARISHEALTH
BETTER TOGETHER

±14,825 SF Full Third-Floor
Just Leased

**JOIN THE MOMENTUM
AND SECURE YOUR IDEAL
WORKSPACE TODAY!**

FOR MORE INFORMATION:

Lesley Sheinberg, Managing Director
lsheinberg@mhcreal.com | C: 561 254 7810