

PREMIER OFFICE SPACE

PRESTIGIOUS PGA NATIONAL SETTING WITH
DIRECT TURNPIKE ACCESS AND LAKE VIEWS



7111 & 7121 FAIRWAY DRIVE

Palm Beach Gardens, FL

 FairwayOfficeCenter.com

 561 471 8000

NAI Merin Hunter
Codman, Inc.
Commercial Real Estate Services, Worldwide.



FAIRWAY
center

Lake Views, Modern Spaces, Limitless Potential



Fairway Center

7111 & 7121 Fairway Drive
Palm Beach Gardens, FL

Property Highlights



Two, modern, four-story Class-A office buildings adjacent to the prestigious PGA National Resort



Direct access to PGA Boulevard & Florida's Turnpike, minutes from I-95



Amenities include green spaces for relaxation, ample parking with covered available, and move-in ready spaces available



Just a short drive to...



Publix. *Walgreens*

For more information

Jason Sundook, SIOR, Principal
561 471 8000 | jsundook@mhcreal.com

Neil E. Merin, SIOR, CCIM,
Managing Director | merinlistings@mhcreal.com



561 471 8000



1601 Forum Place, Suite 700
West Palm Beach, FL 33401



www.mhcreal.com
www.FairwayOfficeCenter.com

FOR LEASE: 7111 & 7121 FAIRWAY DRIVE, PALM BEACH GARDENS

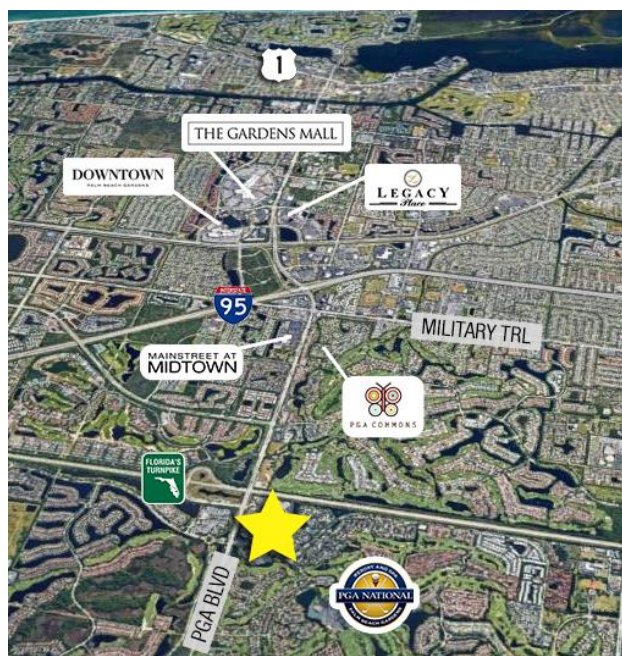
Workspace That Works For You, Near Everything




Stunning, First-Class Office Space on a Lush, 16-acre Campus

7111 & 7121 Fairway Drive are part of the prestigious Fairway Office Center, providing fantastic amenities in a prestigious location near the best of Palm Beach Gardens.

- Tropical and modern office park
- Ample parking with covered available
- Tranquil green spaces
- Close to popular shopping districts, luxurious residential communities, and country clubs



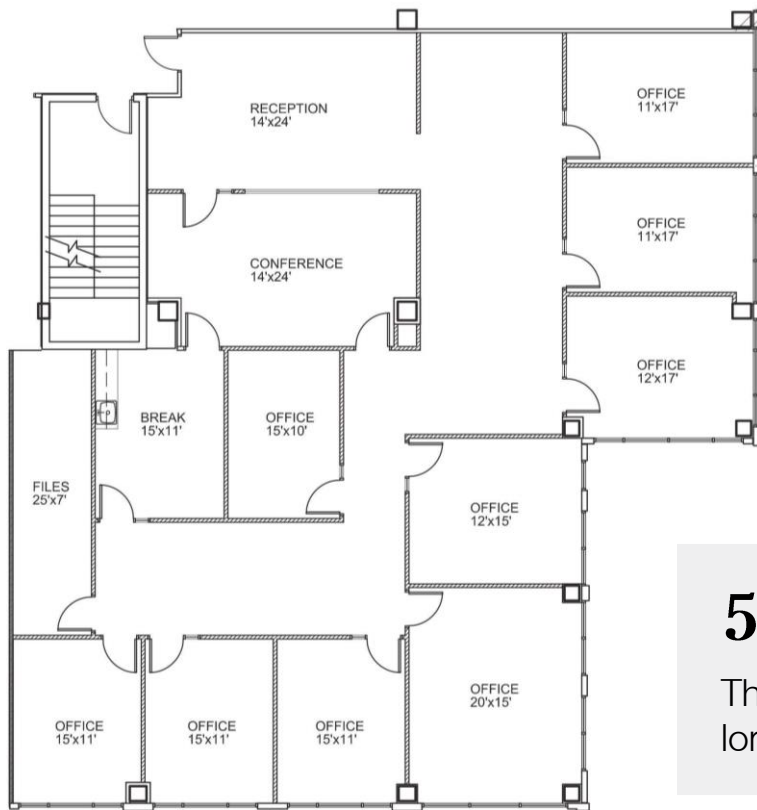
Jason Sundook, SIOR | jsundook@mhcreal.com
Neil Merin, SIOR, CCIM | merinlistings@mhcreal.com

 561 471 8000

 www.mhcreal.com
www.FairwayOfficeCenter.com

FOR LEASE: 7111 & 7121 FAIRWAY DRIVE, PALM BEACH GARDENS

Now Available: Move-In-Ready Office Suites



Not to scale. Subject to error. Furniture for display only and not included.

7111- Suite 302

4,376 SF

561 471 8000

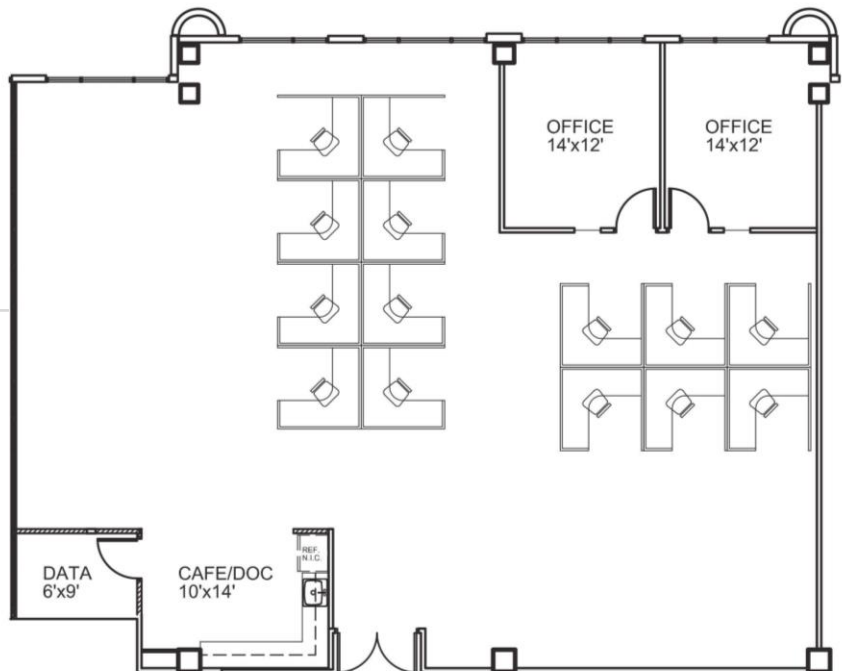
These move-in-ready suites won't last long—call for more information!

7111- Suite 410

3,378 SF




**VIEW
3D TOUR**



Furniture for illustrative purposes only. Not to scale. Subject to error.

Jason Sundook, SIOR | jsundook@mhcreal.com
Neil Merin, SIOR, CCIM | merinlistings@mhcreal.com

 561 471 8000



www.mhcreal.com
www.FairwayOfficeCenter.com