

For Lease  
±3,071 SF  
Class-A Office Space



**3501-3601 PGA Boulevard** Palm Beach Gardens, FL 33410

## Property Features

- Class-A boutique office complex located within the prestigious Downtown Palm Beach Gardens area
- Building features include beautiful common area finishes, abundant natural light, high ceilings and ample parking
- Easy walk to numerous retail, dining and professional conveniences including the Gardens Mall, Legacy Place and more

For more information:

**Lesley Sheinberg**

Managing Director | [lsheinberg@mhcreal.com](mailto:lsheinberg@mhcreal.com)

## Key Features:



Fantastic location near  
Downtown Palm Beach Gardens



Multiple signage  
opportunities



Close to numerous retail and  
professional conveniences

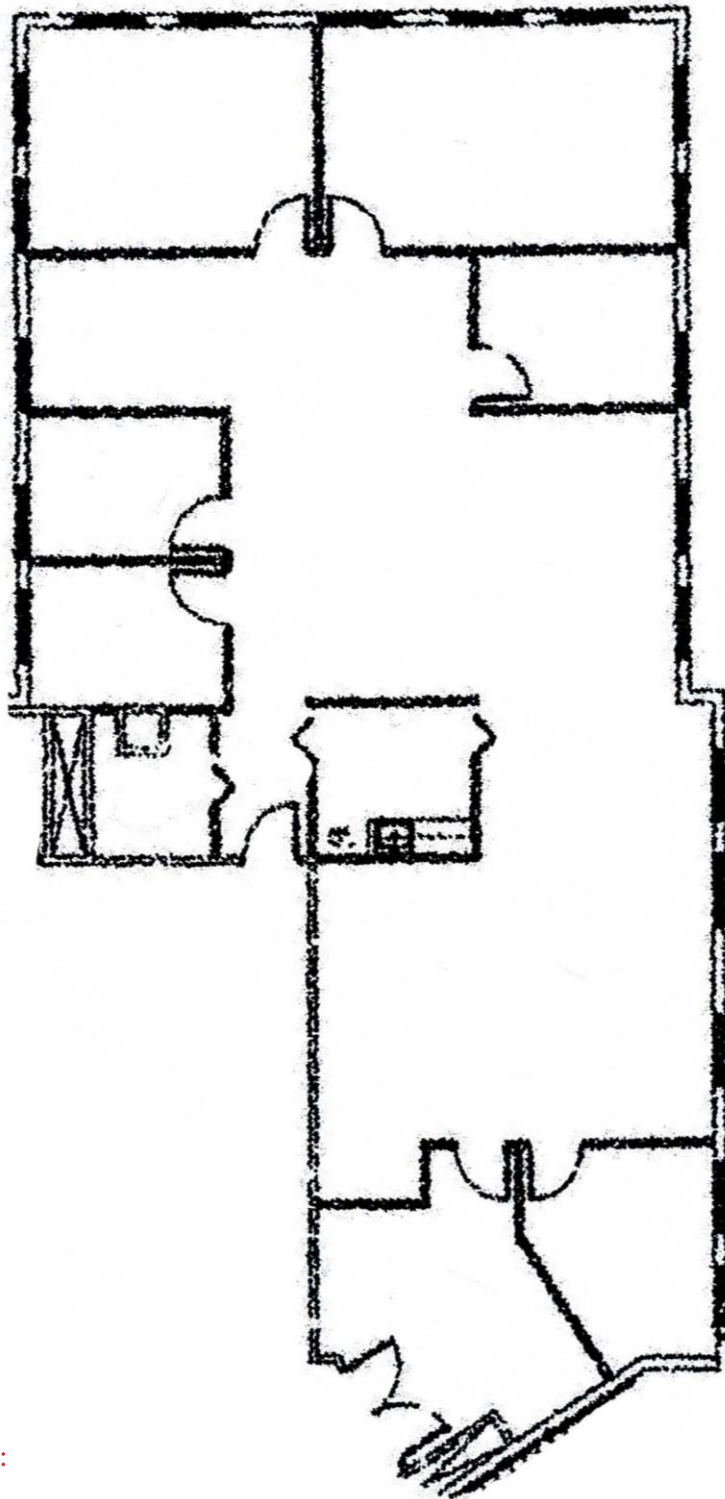


24-hour access



FOR LEASE: 3501-3601 PGA BOULEVARD, PALM BEACH GARDENS

±3,071 SF Office Space Near Downtown Area



For more information:

**Lesley Sheinberg**

Managing Director | [lsheinberg@mhcreal.com](mailto:lsheinberg@mhcreal.com)

NO WARRANTY OR REPRESENTATION, EXPRESS OR IMPLIED, IS MADE AS TO THE ACCURACY OF THE INFORMATION CONTAINED HEREIN, AND THE SAME IS SUBMITTED SUBJECT TO ERRORS, OMISSIONS, CHANGE OF PRICE, OR WITHDRAWAL WITHOUT NOTICE.



561 471 8000



1601 Forum Place, Suite 700  
West Palm Beach, FL 33401



[www.mhcreal.com](http://www.mhcreal.com)

FOR LEASE: 3501-3601 PGA BOULEVARD, PALM BEACH GARDENS

±3,071 SF Office Space Near Downtown Area



## Unbeatable Location Near The Best of Palm Beach Gardens

This premier office complex is nestled within the area's finest amenities and close to arterial roads including I-95, the Florida Turnpike, A1A, and US-1.

Enjoy an easy walk to dozens of conveniences in Downtown Palm Beach Gardens and the Gardens Mall.

Rate: \$32.00/SF NNN

CAM: \$11.82/SF

For more information:

**Lesley Sheinberg**

Managing Director | [lsheinberg@mhcreal.com](mailto:lsheinberg@mhcreal.com)

