

# Office/Retail - For Sale or Lease

## The VFW Building

1114 N. Dixie Highway, Lake Worth, Florida



**For Sale: \$599,000**  
**For Lease: \$15.00/sf Gross**

### Downtown Lake Worth

- 5,400 square feet - Freestanding Building with plenty of parking
- Owner will paint the exterior and deliver the interior as Vanilla Shell
- Needs some TLC
- Prime exposure on Dixie Highway, just north of 10th Avenue N.
- Great for restaurant, bar, nightclub, gallery, home furnishings, interior design, day spa, professional office
- Centrally located in Palm Beach County and convenient to I-95, downtown Lake Worth and the beaches



**NAI** Merin Hunter  
Codman, Inc.  
Commercial Real Estate Services, Worldwide.

The information contained herein has been given to us by the owner of the property or other sources we deem reliable. We have no reason to doubt its accuracy, but we do not guarantee it. All information should be verified prior to purchase or lease.

An NAI Merin Hunter Codman *Brokerage Team*:

**David W. Knott**  
mobile (561) 662-5758  
[dknott@mhcreal.com](mailto:dknott@mhcreal.com)

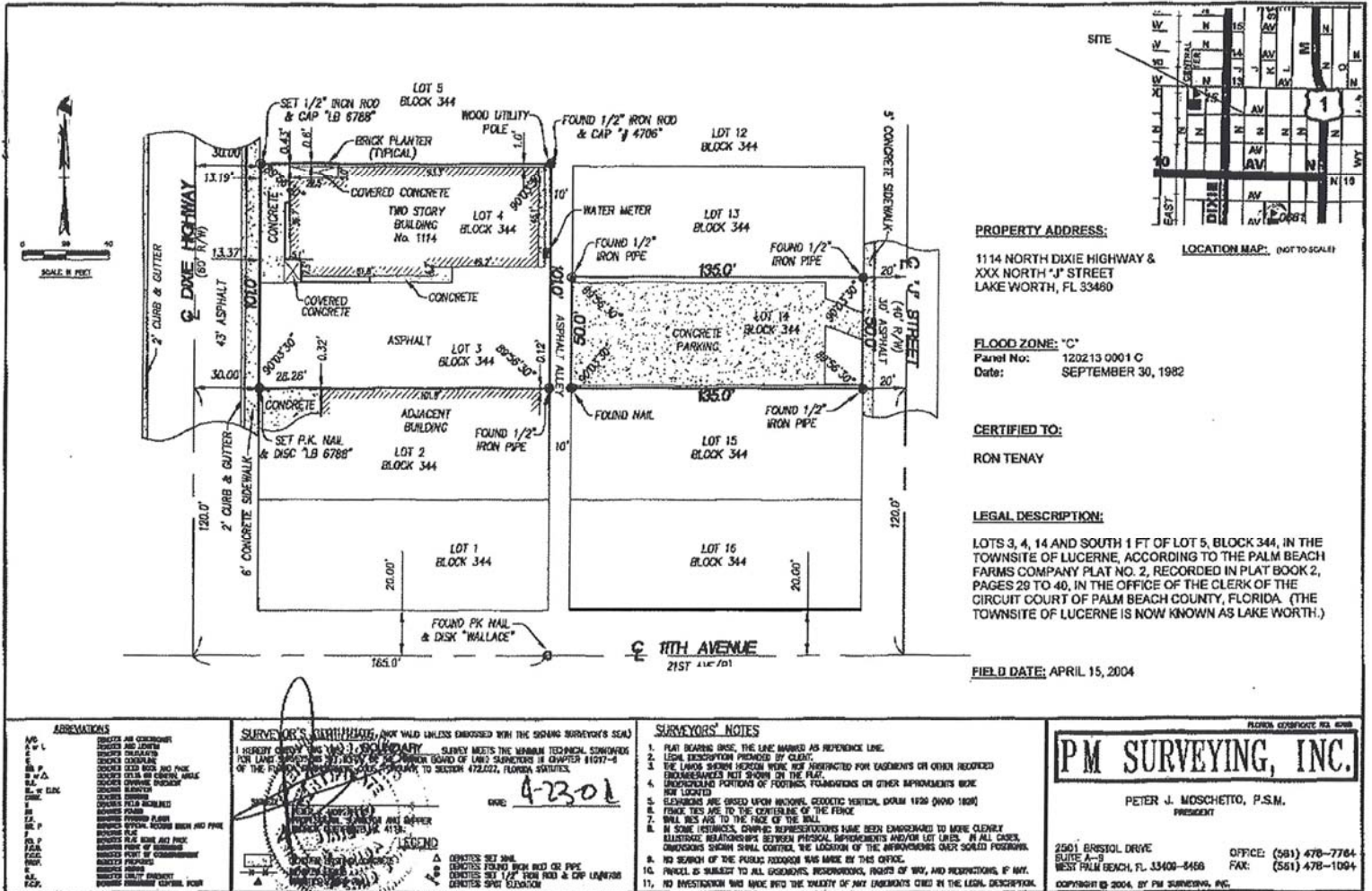
**C. Todd Everett, SIOR**  
mobile (561) 414-8567  
[cteverett@mhcreal.com](mailto:cteverett@mhcreal.com)

NAI/Merin Hunter Codman  
1601 Forum Place, Suite 200  
West Palm Beach, Florida 33401

tel (561) 471-8000  
fax (561) 471-9992  
[www.mhcreal.com](http://www.mhcreal.com)

# Survey

The VFW Building  
1114 N. Dixie Highway, Lake Worth, Florida



**NAI Merin Hunter Codman, Inc.**

Commercial Real Estate Services, Worldwide.

The information contained herein has been given to us by the owner of the property or other sources we deem reliable. We have no reason to doubt its accuracy, but we do not guarantee it. All information should be verified prior to purchase or lease.

An NAI Merin Hunter Codman Brokerage Team:

**David W. Knott**  
mobile (561) 662-5758  
dknott@mhcreal.com

**C. Todd Everett, SIOR**  
mobile (561) 414-8567  
cteverett@mhcreal.com

NAI/Merin Hunter Codman  
1601 Forum Place, Suite 200  
West Palm Beach, Florida 33401

tel (561) 471-8000  
fax (561) 471-9992  
www.mhcreal.com