

For Lease
±1,183-4,166 SF
Office Space



PRIME LOCATION, GREAT SPACE, BEST VALUE
Recent Property Upgrades | Immediate Occupancy | New Spec Suites

Concept II Towers

2290-2328 10th Avenue North, Lake Worth, FL 33461

Enjoy professional office space in a convenient location at Concept II Towers, situated within Central Palm Beach County.

Tenants enjoy ample free parking with upgrades available, recently renovated common areas and newly completed spec suites, large windows allowing an abundance of natural light, an on-site café, excellent unobstructed views of Lake Worth, and more.

Christopher T. Smith

Commercial Associate | csmith@mhcreal.com

Jaime Chamberlin

Commercial Associate | jchamberlin@mhcreal.com

Key Features:



Great location, just
½ mile west of I-95



Newly renovated common
areas and new spec suites



Immediate
occupancy



On-site
food service



Approved for medical use

Jason L. Sundook, SIOR

Principal | jsundook@mhcreal.com

Concept II Towers

2290-2328 10th Avenue North, Lake Worth, FL 33461

For Lease
±1,183-4,166 SF
Office Space



Great Central Palm Beach County Location Just west of I-95!

Property Features

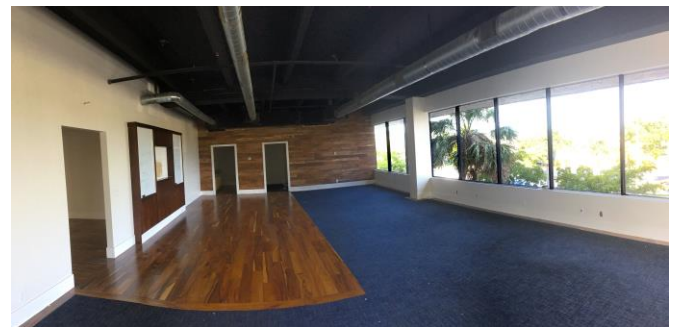
- Twin 6-story office buildings in a great central Palm Beach County location
- Newly renovated common areas and spec suites ready for immediate occupancy
- Ample parking with reserved parking available
- Direct I-95 access via 10th Avenue and only 10 minutes from downtown West Palm Beach
- On-site amenities include food service, UPS & FedEx drop boxes, and a waterside picnic area

Christopher T. Smith

Commercial Associate | csmith@mhcreal.com

Jaime Chamberlin

Commercial Associate | jchamberlin@mhcreal.com



Jason L. Sundook, SIOR

Principal | jsundook@mhcreal.com

NO WARRANTY OR REPRESENTATION, EXPRESS OR IMPLIED, IS MADE AS TO THE ACCURACY OF THE INFORMATION CONTAINED HEREIN, AND THE SAME IS SUBMITTED SUBJECT TO ERRORS, OMISSIONS, CHANGE OF PRICE, RENTAL OR OTHER CONDITIONS, PRIOR SALE, LEASE OR FINANCING, OR WITHDRAWAL WITHOUT NOTICE, AND OF ANY SPECIAL LISTING CONDITIONS IMPOSED BY OUR PRINCIPALS NO WARRANTIES OR REPRESENTATIONS ARE MADE AS TO THE CONDITION OF THE PROPERTY OR ANY HAZARDS CONTAINED THEREIN ARE ANY TO BE IMPLIED.

1601 Forum Place Suite 700
West Palm Beach FL 33401
561 471 8000
mhcreal.com