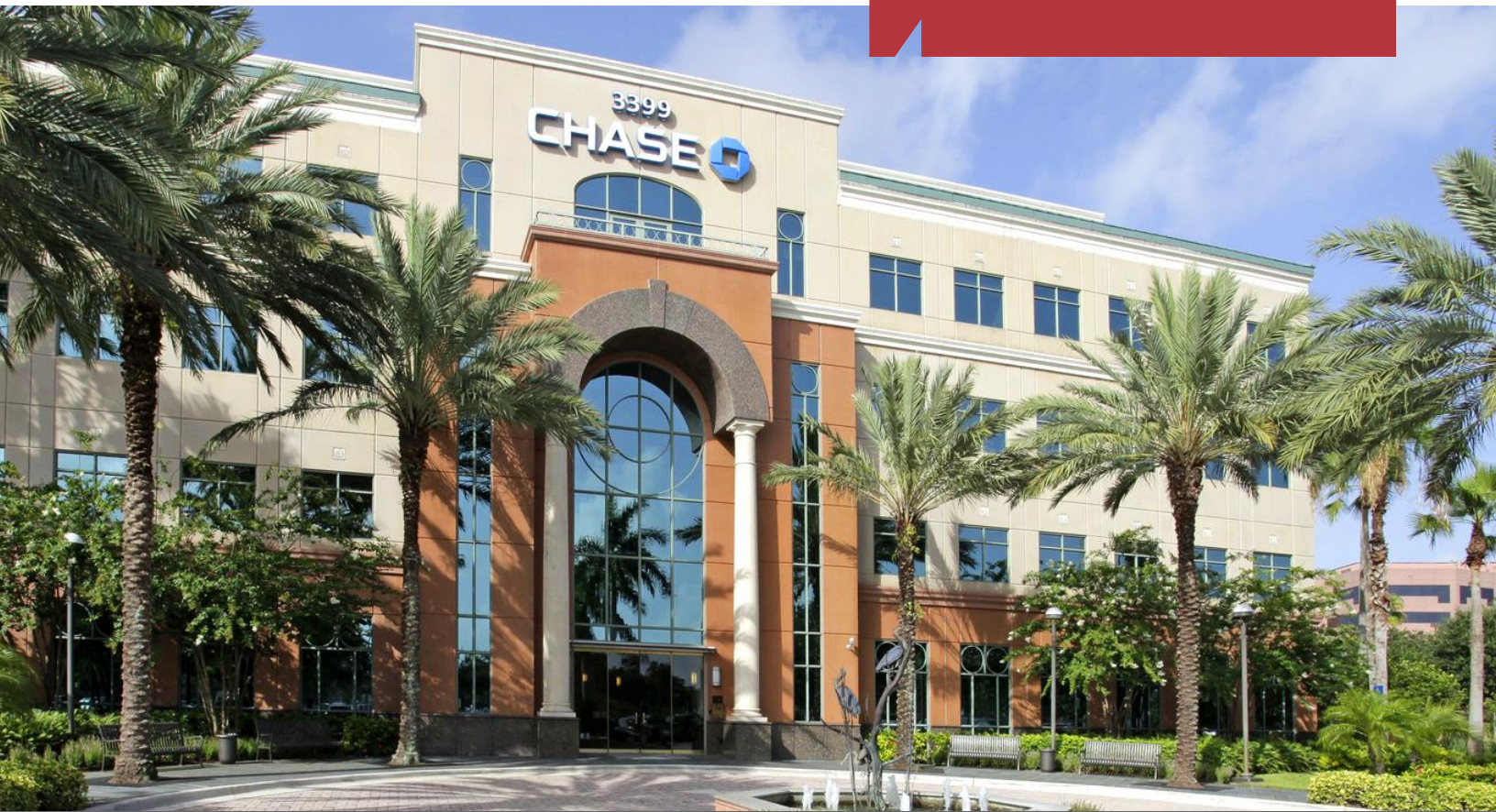


For Lease
±2,571 SF
Class-A Office Space



PGA Financial Plaza

3399 PGA Boulevard, Palm Beach Gardens, FL 33410

Property Features

- Premier four-story Class-A office building in pristine condition
- First class finishes throughout entire building
- Within walking distance to numerous dining, shopping, and banking options
- Prominent location at the corner of PGA Blvd. and Fairchild Gardens Ave., adjacent to the Gardens Mall
- On-site management and maintenance

Christopher T. Smith

Commercial Associate | csmith@mhcreal.com

Key Features:



Highest Energy Star rated building on PGA



Prime location, just one mile east of I-95



Approved for medical

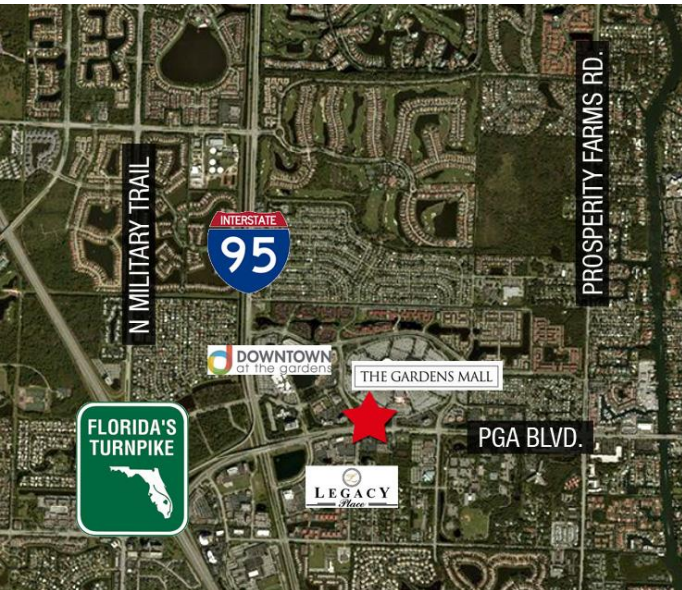
Jason L. Sundook, SIOR

Principal | jsundook@mhcreal.com

PGA Financial Plaza

3399 PGA Boulevard
Palm Beach Gardens, FL 33410

For Lease
±2,571 SF
Class-A Office Space

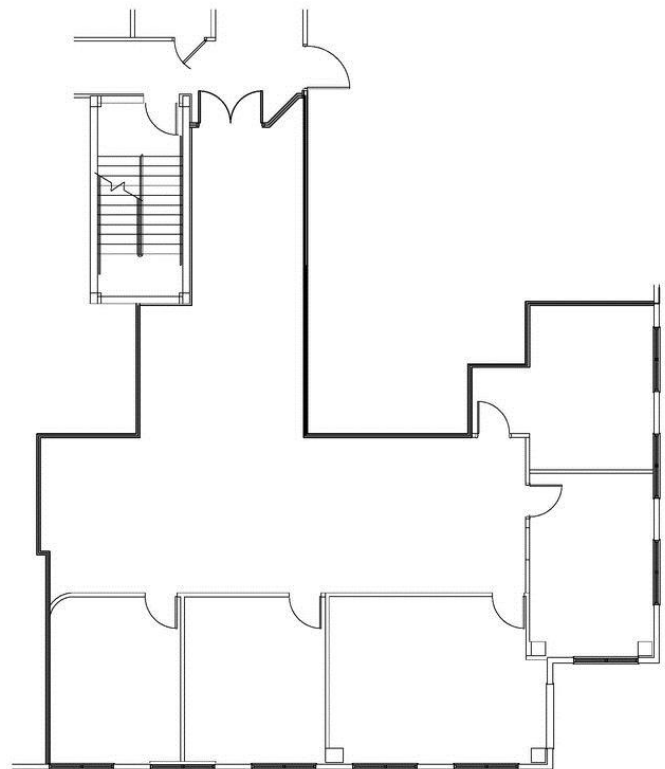


Class-A Professional Office Space on PGA Boulevard

Close to all of Palm Beach Garden's conveniences including The Gardens Mall, Downtown at the Gardens and Legacy Place

Suite 230

- Last suite remaining
- Previously used by law firm
- Great end of hall exposure on the Southeast corner of the building
- Flexible floor plan with large perimeter offices and open space
- PGA Boulevard views
- Spacious feel with high ceilings and doors



For more information:

Christopher T. Smith

Commercial Associate | csmith@mhcreal.com

Jason L. Sundook, SIOR

Principal | jsundook@mhcreal.com

NO WARRANTY OR REPRESENTATION, EXPRESS OR IMPLIED, IS MADE AS TO THE ACCURACY OF THE INFORMATION CONTAINED HEREIN, AND THE SAME IS SUBMITTED SUBJECT TO ERRORS, OMISSIONS, CHANGE OF PRICE, RENTAL OR OTHER CONDITIONS, PRIOR SALE, LEASE OR FINANCING, OR WITHDRAWAL WITHOUT NOTICE, AND OF ANY SPECIAL LISTING CONDITIONS IMPOSED BY OUR PRINCIPALS NO WARRANTIES OR REPRESENTATIONS ARE MADE AS TO THE CONDITION OF THE PROPERTY OR ANY HAZARDS CONTAINED THEREIN ARE ANY TO BE IMPLIED.

1601 Forum Place Suite 700
West Palm Beach FL 33401
561 471 8000
mhcreal.com